

C-DQ Series

PRODUCT DATA SHEET

Temperature Controls

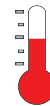
Dual Set-Point, Precise Control

Large (.56" high) easy to read LED display

Large switching capacities from 20 to 125 amps for up to 600 volts

±.25% full span, single digit accuracy

Single or Three phase



Adjustable temperature range from -40°F(-40°C) to 999°F(538°C)



cULus



C-DQ SERIES, DIGITAL COMBINATION CONTROLS

MODEL NUMBER	VOLTS	MAX. AMPS	REPL. RELAY P/N	REPL. TRANS.	REPL. SENSOR P/N	SHIP WGT. Lbs./ (kg)
C-DQ202	240	20	AHD-20-1	HDD50 2/1	RTD1000	16
C-DQ204	480	20	AHD-20-1	HDD50 4/1	RTD1000	(7.3)
C-DQ402	240	40	AHD-40-1	HDD50 2/1	RTD1000	17
C-DQ404	480	40	AHD-40-1	HDD50 4/1	RTD1000	(7.7)
C-DQ802	240	80	AHD-80-1	HDD100 2/1	RTD1000	25
C-DQ804	480	80	AHD-80-1	HDD100 4/1	RTD1000	(11.3)
C-DQ1252	240	125	AHD-125-1	HDD300 2/1	RTD1000	33
C-DQ1254	480	125	AHD-125-1	HDD300 4/1	RTD1000	(15)

PROCESS TECHNOLOGY

ISO 9001:2015
WITH DESIGN CERTIFIED

Features & Values

- Large (.56" high), easy to read LED display. Provides precise control for consistent plating and etch rates in most aqueous processes.
- Fluoropolymer (FEP) covered 10-foot (3m), 1000-ohm platinum RTD sensor included standard with the control. Provides extended service in corrosive liquids and can be lengthened with ordinary copper wire.
- NEMA 1, IP21, flame retardant and gasketed plastic enclosure with stainless steel hardware
- Large switching capacities from 20 to 125 amps for up to 600 volts.
- 20°F(-7°C) to 140°F(60°C) ambient temperature range
- ±.25% full span, single digit accuracy
- 20°F(-7°C) to 140°F(60°C) ambient temperature range
- Control transformer included.

Specifications

Temperature Range Adjustable temperature range from -40°F(-40°C) to 999°F(538°C)

Options

- Scalable voltage and current inputs
- 4-20 mA outputs for process recording
- Three wire 100-ohm RTD sensors
- Special sensors required for temperatures above 500°F(260°C)
- 25-foot (7.6m) and 50-foot (15.2m) sensors
- P2, P3 or P8 thermal protection systems
- Intergrated liquid level control components
- Front panel mounted digital timers
- Ground fault protection of equipment (GFPE) circuitry.
- NEMA 4/4X enclosure (with internal heater for outdoor use)

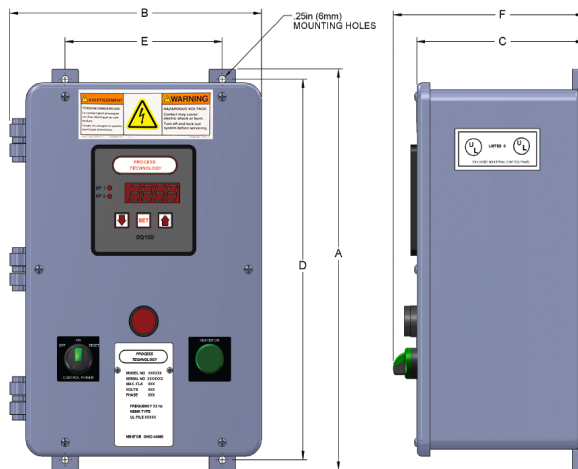
Safety Features

- Pre-wired P1 terminal blocks
- Non-volatile memory
- Programmable high alarm shutdown
- Sensor short and break protection
- Programmable high set point limit
- Security code restricted menu

Certifications

cULus

Dimensions



Dimensions	20-40 Amps	80 Amps	125 Amps
A	14.375" (365mm)	18" (457mm)	20.25" (514mm)
B	9.63" (245mm)	13.75" (349mm)	15.75" (400mm)
C	6.25" (159mm)	7.625" (194mm)	8.375" (213mm)
D	13.625" (346mm)	17" (432mm)	19.25" (489mm)
E	6" (152mm)	10" (254mm)	12" (305mm)
F	7.03" (175mm)	8.4" (213mm)	9.15" (232mm)

*Box dimensions may vary with options

Model Number Breakdown

C	DQ	20	8	E	-L
Control Type	Series	Amperes	Voltage	Control Option	Standard Options
C - Combo	DQ	20 40 80 125	2 - 240 3 - 380 4 - 480 5 - 415 6 - 600 7 - 400 8 - 208 9 - 220 0 - 200	E = Easyplug -M = Milliamp output	-R = RTD 100 -H = High temp sensor -L = No sensor - R = Rigid RTD (specify length) -25 = 25 foot RTD sensor -50 = 50 foot RTD sensor -F = FEP sleeved sensor -P2 = thermal protector 2 circuitry -P3 = thermal protector 3 circuitry -P8 = thermal protector 8 circuitry -LC** = conductive liquid level -ESP** = capacitive liquid level -D = digital timer -G = ground fault protection -N = NEMA 4X -NH = NEMA 4X with heater

PROCESS TECHNOLOGY